

E.N.T DIODE LASER



INTENSE MEDICAL & DENTAL
SYSTEM PVT. LTD.



Models-

Fab lase - 15W/980nm(Mini)

Vital lase- 15W/980nm (Heavy Duty)



IMDSL Soft Tissue Diode Laser for ENT

- ✓ Mini Ent Diode Laser Is Ideal For Users Who Are Looking For A Portable Machine For Micro Laryngeal Surgeries Stapedectomy .
- ✓ 15W Heavy duty diode laser is designed for hospital setup.
- ✓ The laser is calibrated to deliver precise energy for precise outcomes.
- ✓ The Pre set parameters are designed as per our Indian patients however it can be changed as per specific requirement.
- ✓ 980nm is a classical wavelength for soft tissue cutting, coagulation & Photobiomodulation

BENEFITS OF USING DIODE LASER IN E.N.T SURGERY

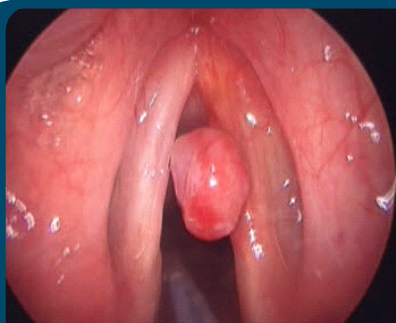
1. Micro surgical precision
2. Tactile feedback
3. Minimum post operative care
4. Faster recovery
5. Minimal Bleeding
6. No collateral tissue damage
7. Clear view of operating field
8. Atraumatic procedure
9. No chances of cross infection

Indications

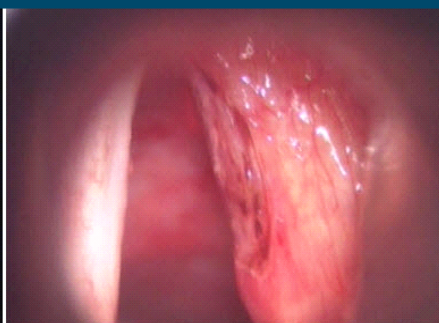
- ✓ Tonsillectomy
- ✓ Nasal turbinate reduction
- ✓ Vocal cord nodule & polyp
- ✓ Stapedectomy
- ✓ LAUP(Uvulopalatoplasty)
- ✓ Mucocele
- ✓ Fibroma
- ✓ Leukoplakia
- ✓ Tongue tie
- ✓ Mucocele
- ✓ Hemangioma
- ✓ OSMF
- ✓ Nasal Polyp
- ✓ DCR Incision

Vocal Cord Polyp

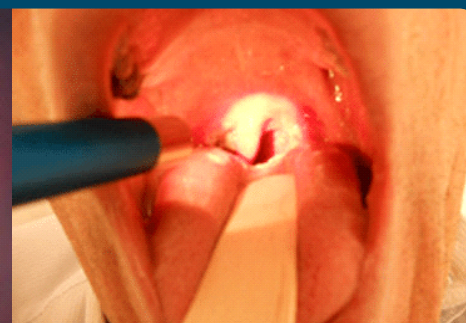
Laser Tonsillectomy



Before



After



Advantages of Laser Surgery

- ✓ Bloodless
- ✓ Minimal anesthesia
- ✓ Less hospitalization
- ✓ Minimal post operative discomfort
- ✓ Faster recovery
- ✓ Better results

Probes



Specifications	Fab Lase	Vital Lase
Maximum Power	15W	15W(Heavy Duty)
Battery Backup	Yes	No
Foot switch	Bluetooth	Bluetooth/ Wired
Wavelength	980nm	
Mode	CW/Pulse	
Aiming Beam Wavelength	650nm	
ENT Tips	4 tips	
Fiber Thickness	400micron, 600 micron	
Fiber connector	SMA 905A Connector	
Fiber length	3 meter	
Warranty	2 years	

INTENSE MEDICAL & DENTAL SYSTEM PVT LTD

Manufacturing : G-7, Industrial Area Bagroda Bhopal M.P. - 462026

Corp. Office:- No. 308, 5th Floor, Plot No. 52-A, Krishna Complex, Hasanpur, I.P. Extension, Delhi 110092

E: imdsl@yahoo.com W: www.imdsl.co.in